

# 2.5" FRP Membrane Housing Contents

<b>1</b>	<b>Explanation Model</b>	<b>02</b>
<b>2</b>	<b>Specification</b>	<b>02</b>
<b>3</b>	<b>Components</b>	<b>02</b>
<b>4</b>	<b>Quality Assurance</b>	<b>03</b>
<b>5</b>	<b>Certificates</b>	<b>04</b>
<b>6</b>	<b>Projects</b>	<b>04</b>
<b>7</b>	<b>Addendum Drawings</b>	<b>05</b>

<b>7 - 1</b>	<b>W25E300 FRP membrane housing drawing.....</b>	<b>05</b>
<b>7 - 2</b>	<b>W25E1000 FRP membrane housing drawing.....</b>	<b>05</b>

## 2.5" FRP Membrane Housing

- ☆ Composite Construction.
- ☆ Unique Mirror Finish ID.
- ☆ Quick Locking System.
- ☆ Smooth Inner Wall Surface.
- ☆ Brightly Colored Baking Process.
- ☆ Adapters, Interconnectors & Mounting Clamps Available.
- ☆ Certified by ASME, ISO9001, ISO14001 and GB/T2800.



### Technical Specification

- Material:** Fiberglass and epoxy.
- Working Pressure:** 300–1000 PSI.
- Operating Temperature:** -10 °C–49 °C.
- Connection Type:** End port.
- Operating pH Range:** 3–11.
- Cleaning pH Range:** 2–12 (≤ 30 min).

### Test

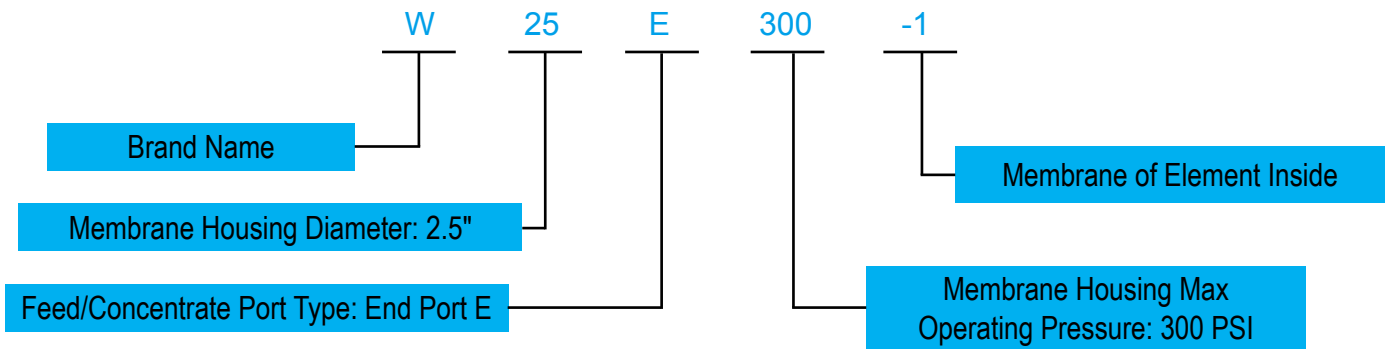
- Burst Test :** 6 times of its design pressure.
- Cycle Test:** 100000 times.
- Hydraulic Test:** 100% quality assurance test with 1.2 times stage elevation.
- Barcol Hardness Test:** Repeated once every 1.5 meters.
- Test every membrane housing, not sampling.**





[ Explanation Model ]

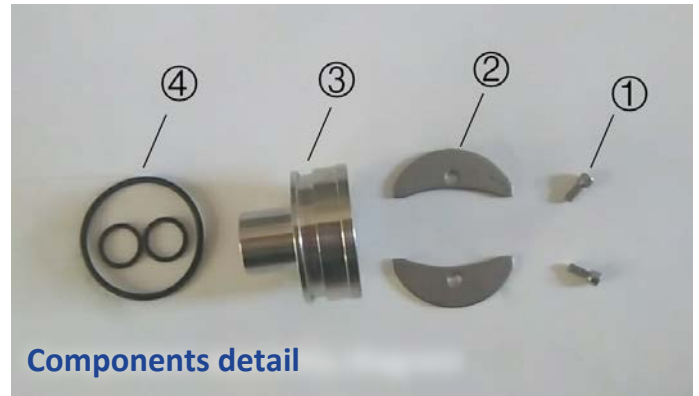
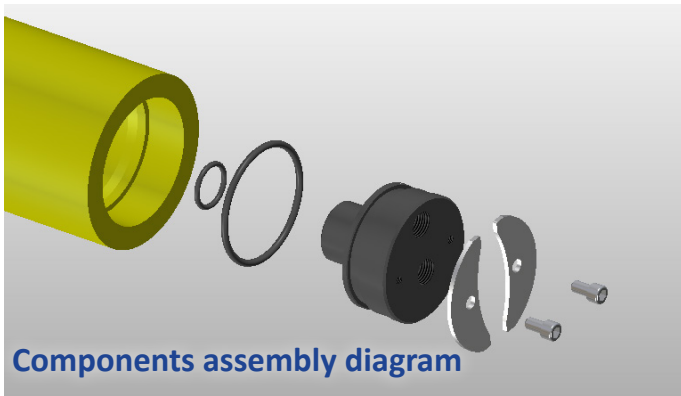
Explanation of Codes of Winder Membrane Pressure Vessels



[ Specification ]

Model No.	Design pressure (PSI)	Operating temperature	Feed port (inch)	Permeate port (inch)	Connection	Element length
W2514E300	300	-10 °C–49 °C	1/4" RC	1/4" RC	End port	14" × 1
W2521E300	300	-10 °C–49 °C	1/4" RC	1/4" RC	End port	21" × 1
W2540E300	300	-10 °C–49 °C	1/4" RC	1/4" RC	End port	40" × 1
W2514E1000	1000	-10 °C–49 °C	1/4" RC	1/4" RC	End port	14" × 1
W2521E1000	1000	-10 °C–49 °C	1/4" RC	1/4" RC	End port	21" × 1
W2540E1000	1000	-10 °C–49 °C	1/4" RC	1/4" RC	End port	40" × 1

[ Components ]

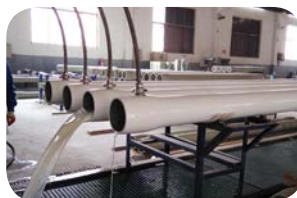


Serial-Number	Description	Material
①	Inner hexagonal head bolt	M5*1.5, 304
②	Crescent film	SA-213, 304
③	Pressure head	2205
④	Sealing rings	EPDM

[ Quality Assurance ]



**Barcol hardness test:**  
 repeated once every 1.5 meters.



**Hydraulic test:**  
 100% quality assurance test with 1.2 times stage elevation. Keep pressure for 2 minutes to ensure no leakage.



**Burst test :**  
 6 times of its design pressure.

**Cycle test:**  
 100000 times.

Certificates



ASME

CNAS28001

ISO9001

ISO14001

Projects



Gansu chemical plant water process engineering. May 2014



Biel Crystal water treatment engineering. May 2015



April Fine Paper water treatment engineering. May 2015



Daya Bay Cnooc's refinery project. July 2016



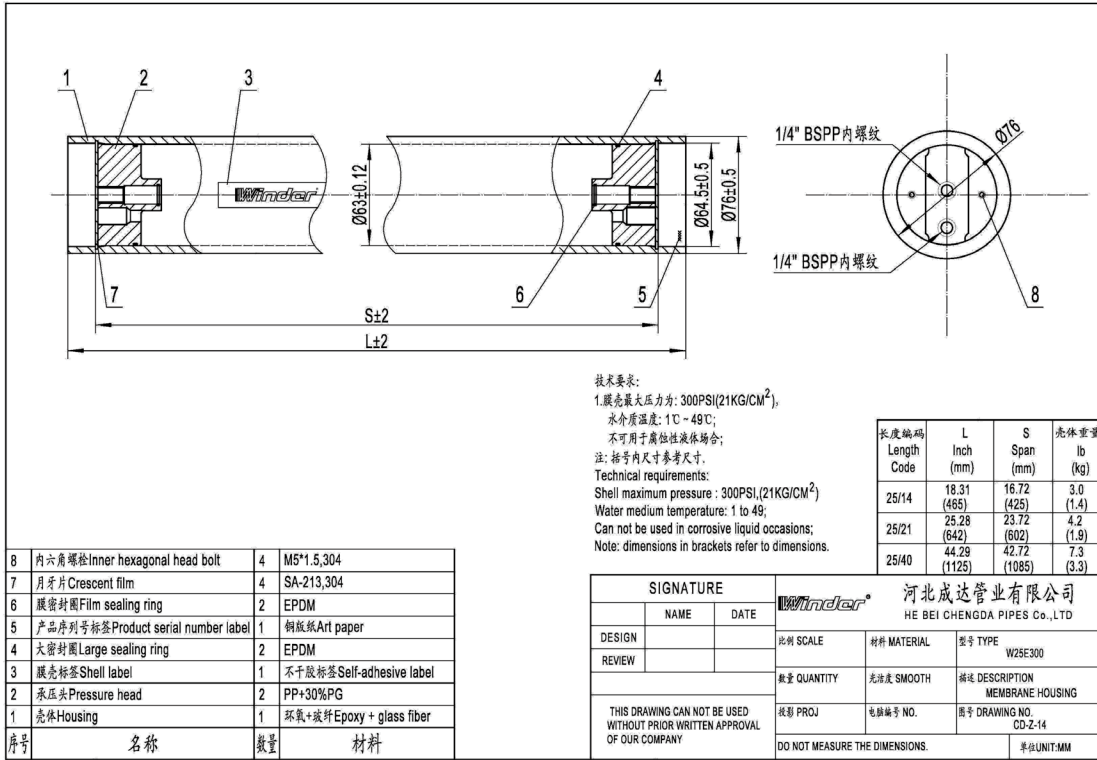
Qingdao wastewater reclamation project. Aug 2016



Dalian Hengli petrochemical water treatment project. Nov 2017

Addendum Drawings

1. W25E300 FRP membrane housing drawing



2. W25E1000 FRP membrane housing drawing

